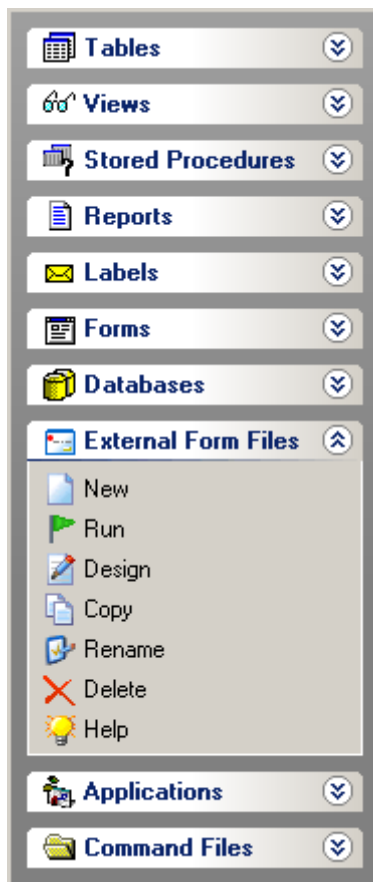


R:BASE® vs. the Others

Comparing R:BASE with Other Databases



A. Razzak Memon

February 6, 2008

R:BASE vs. the Others

If you are ever faced with questions regarding R:BASE versus some other Database Management Systems, including topics such as:

- I can do this with that other DBMS
- Look what you can do with this DBMS
- R:BASE is slow and others are faster
- R:BASE is limited to a 2GB file size

First you need to make sure that they are not comparing other databases with a legacy R:BASE database. Second, make sure that they are aware of the latest developments and the released version of R:BASE 7.6 for Windows. Let them try the evaluation version of R:BASE 7.6 for Windows (<http://www.rbase.com/evaluation>).

This is not your grandfather's Oldsmobile!

Here are some key items to keep in mind that will help overcome doubts anyone may have concerning R:BASE, its technology, and what R:BASE Technologies, Inc. is all about. R:BASE vs. the others should only be compared in the following meaningful and logical categories.

GENERAL:

How do you choose between the widely popular Windows products and the true relational database system with the greater than two decades-long reputation for being the "workhorse" of the database world?

Take a good look at the 25 year history of R:BASE at <http://www.rbase.com/history>.

R:BASE offers many key advantages over others - advantages that are better suited to overall business or departmental needs. R:BASE is designed much like the powerhouse database management systems of the mainframe and mid-range computer world, while empowering the individual business user.

FEATURES and PERFORMANCE:

Others' claim to fame lie in visual appeal and user assistance tools.

Until the release of R:BASE 7.0 for Windows (October 6, 2003), what R:BASE lacked in flash it made up in outstanding performance. The latest release of R:BASE 7.6 and Turbo V-8 for Windows meets and exceeds all that the same class of databases on the market have to offer.

So, go ahead and compare this true-relational database with "all-in-one" tools licensed at a fraction of the cost, point for point with other offerings on the market.

- Robust SQL Engine (25 years of production)
- Multi-Lingual Support
- Stored Procedures, Before and After Triggers
- Temporary Tables and Views
- Versatile Database Explorer
- Built-in Form Designer with over 80 Controls
- Support for ActiveX Controls
- Built-in Report Designer with over 25 Controls
- Sub-Reports and Nested Sub-Reports
- Custom Procedures and Actions for Forms
- Custom Procedures and Actions for Reports (even at the individual Report Band Level)
- Label Designer with over 25 Controls
- Quick and Powerful Application Designer (with all code embedded for full portability)
- Built-in Crosstab Controls in Reports
- Built-in MAPI E-Mail
- Built-in Image/BLOB Data Viewer/Editor
- Built-in RTF Editor
- Built-in PDF Writer with 128bit Security

- Built-in HTML, XHTML Writer
- Built-in RTF, XLS Writer
- Built-in Bar Codes
- Built-in Form Themes
- Built-in E-Mail Support for Reports
- Built-in Graphical Query Designer with Wizard
- Built-in Versatile File Gateway (Import/Export)
- Built-in Support for Industry Standard XML Format
- Simple to Use Form Wizard
- Simple to Use Report Wizard
- Fast and Easy Label Wizard
- Application Wizard with No Outside Code
- GUI Text Editor and Text Highlighting
- Built-in Structural Error Checking to help debug your code
- Trace Debugger with Watch Variables
- Integrate Your Custom Plugins and WinUDFs
- Data Dictionary for Database Information
- Familiar R> Prompt for SQL Queries

R:BASE provides quick data retrieval - whether from a local database or a networked database. Data can be retrieved in sub-second response times, even when the number of records is well into the hundreds of thousands. Even joins between multiple tables, each with record counts in excess of one hundred thousand, yield response times in seconds.

CAPACITY:

Others can help you build small, simple databases quickly. R:BASE lets you easily build databases on which you can run a business or department.

You can rest assured that your data requirements will not likely outgrow the capabilities of R:BASE. However, should that ever happen, you can smoothly migrate to R:BASE V-8 Turbo, with no limits, without rewriting a single line of code or spending hundreds of thousands of dollars.

R:BASE has been known to effectively manage over ten million records and commonly handles databases that exceed one gigabyte. Even when the volume of data gets this high, R:BASE still provides quick response, using optimized retrieval and efficient indexing algorithms, even in a LAN environment.

TECHNICAL INDEPENDENCE:

Others provide Wizards to help you build simple, attractive forms and reports. R:BASE provides a totally integrated solution including a Database Explorer, Database Designer, Forms Builder, Reports Builder, Labels Builder, Data Browser, Query Builder, and a complete Application Builder that require no programming, nor programming experience. Non-programmers can confidently build comprehensive business applications without any programming experience. This unique "auto programming" environment facilitates building applications tailored to the way you work without your becoming a programmer or having to hire one.

RAPID APPLICATION DEVELOPMENT:

If you're a staff programmer, once you've exhausted the capacity of another product's Wizards, you have to delve into 3GL programming, and it can take you weeks to complete an application. R:BASE quickly helps you to produce fully functional and complete applications. This frees you to spend more time fine tuning the final application after the user has worked it for a while. The net result is a faster turn-around on satisfying end-users' needs.

COMPETITIVE EDGE:

If you're a consultant, other products let you provide a very attractive user interface, but with a long delivery time. They don't tell you up front the cost, learning curve, experience and tools required to even creating a simple form. With R:BASE, you have all the tools, including a fully functional graphical user interface to produce quicker and more powerful applications. In the time it takes your competition to deliver a prototype, you can have a complete application installed and implemented.

INSIGHT (The Power of SQL):

Others have Structured Query Language (SQL), but it is hidden deep within the product behind push-buttons and icons. R:BASE brings SQL up front so you can learn how powerful some very straightforward SQL commands can be, simply by using the R> prompt.

With SQL, you can query your database and change parameters quickly to help uncover hidden nuggets of golden opportunities buried in your data, something that standard reports just won't show. New information will emerge to help you make insightful decisions.

No menuing system can reproduce or replace what can easily and quickly be performed at the R> prompt. Instructions typed in a few seconds in R:BASE require equivalent macros or programs to be written in other Windows DBMSs. A quick update, projection of a temporary table, inserting records from one table to another simply can't be done in other products without resorting to programming.

OVERHEAD:

Others products will recommend using third party tools to design even simple reports. Thus you would have to learn an entirely different program to implement that functionality. R:BASE includes powerful built-in Report Designer, allowing the user to design either quick and simple reports or very complex and graphical custom reports, all-in-one, with no overhead, no additional cost or additional learning.

DESIGNED FOR INTELLIGENCE:

Data is data, but information tells you something useful. Since its inception in 1982, R:BASE was designed to provide information about the data in your database. Most people think databases are designed strictly for automation of "paper" tasks. And, most people don't realize what a wealth of information resides within their databases. R:BASE is a wonderful data mining tool. It helps to show data in different views and to uncover unseen opportunities to get you ahead of your competition.

CROSS PLATFORM COMPATIBILITY:

In competitive Windows products, you cannot support multiple environments, such as Windows and DOS. With R:BASE you can easily support mixed environments with the same application or command file running off the same database. This is important for two reasons.

If you have a mixed environment, users who choose one system over another will either be isolated or be forced into Windows DBMS. With R:BASE, users can have a choice and not be isolated. And, you can support those mixed platforms with the same application code!

A slow migration from DOS to Windows, with other Windows DBMSs, is all or nothing. With R:BASE, you can begin converting slowly as time permits.

Using R:BASE ODBC Driver, you can deploy WEB applications using your favorite language.

R:BASE will soon provide support for the Linux operating system (R:Linux) and Java applications using the native R:BASE JDBC driver.

THE R:BASE 4GL:

The main contenders of the Windows world all have a much more difficult programming language to learn which often reads like cryptic code. R:BASE has an easy to learn, English-like programming language that allows programmers to get more done more quickly.

PRODUCT SUPPORT:

No one can compare the response time and support of the R:BASE product by R:BASE Technologies, with added support by its users, authorized developers and partners around the world on news groups and list servers. This is exclusive to the R:BASE community.

YOU CAN "SWITCH HORSES":

More than a few customers and developers reported that they committed to a conversion to another Windows DBMS and, after more than a year, were not fully converted or were not able to fully replace their R:BASE application. Many feel "stuck" in that they've spent so much money and efforts that they would feel foolish "switching horses" this late in the game.

If you've begun a conversion to another Windows DBMS, please calculate the costs of completing the project, then calculate the costs of converting your existing R:BASE for DOS application to Windows. You will probably realize a significant savings, which can make up for feeling "foolish" any day.

Using R:BASE, you don't need a full-time DBA just to maintain day-to-day database operations.

Using R:BASE, you don't have to have mandatory support and service contracts.

Compare the cost of R:BASE license per-user vs. others.

Compare the cost of additional tools for others.

Compare the cost of maintenance and employee/staff training.

SUMMARY:

If a user tried another database, they probably miss R:BASE for the reasons stated above. No one can deny the power, flexibility and ease-of-use of R:BASE. I know this because those who left and came back tell us this is why they came back. If a user stayed at DOS pending the release of a quality Windows version of R:BASE, now is the time to upgrade. The next generation R:BASE 7.6 is mature and stable, has undergone rigid testing, major enhancements, and offers the DOS R:BASE users an easy and less expensive migration into Windows!

But don't just take my word for it, see it for yourself. Download the evaluation today!

<http://www.rbase.com/evaluation>

Finally, no one can choose your mountain or tell you when to climb ... It's yours alone to challenge at your own pace and time ... The choice is yours!

A. Razzak Memon
Founder, President & CEO
R:BASE Technologies, Inc.

R:BASE Developer, Consultant and Trainer since 1983

R:BASE Help and Resources

R:BASE Home Page:	http://www.rbase.com
R:BASE Product Comparison:	http://www.rbase.com/products/compare.php
R:BASE Product Updates:	http://www.rupdates.com
R:BASE Tutorials:	http://www.rtutorial.com
R:BASE Community:	http://www.rbasecommunity.com
R:BASE Syntax On-Line:	http://www.rsyntax.com
Building Syntax for Property Command:	http://www.rbase.com/property
Building Syntax for GetProperty Command:	http://www.rbase.com/getproperty
R:BASE Solutions:	http://www.rbasesolutions.com
R:BASE Education and Training:	http://www.rbaseuniversity.com
Authorized R:BASE Developers:	http://www.rbase.com/developers
More Technical Documents:	http://www.razzak.com/fte
More Sample Applications:	http://www.razzak.com/sampleapplications

Trademarks:

R:BASE®, OTERRO®, R:Scope®, R:WEB Suite®, R:Tango®, R:Accounting®, R:Capture®, R:Code®, R:Contact®, R:Docs®, R:BASE Editor®, R:Style®, R:Struc®, R:Java®, R:Linux®, R:Mail®, R:Archive®, RAdmin®, R:Chat®, R:Code®, R:ColumnAnalyzer®, R:PDFMerge®, R:PDFSearch®, R:PDFWorks®, R:RemoteControl®, R:Syntax®, R:WatchDog®, R:Merge®, RBZip®, R:Fax®, R:Scheduler®, R:Charts®, R:DWF Viewer®, R:PHP® and Pocket R:BASE® are trademarks or registered trademarks of R:BASE Technologies, Inc. All Rights Reserved. All other brand, product names, company names and logos are trademarks or registered trademarks of their respective companies.



R:BASE Technologies, Inc.
3935 Old William Penn Highway
Murrysville, PA 15668-1854 USA
1+724.733.0053 Phone
1+724.733.0196 Fax
<http://www.rbase.com>